

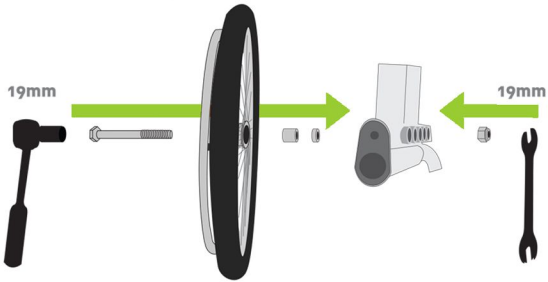


RoughRider[®] *Assembly Manual*



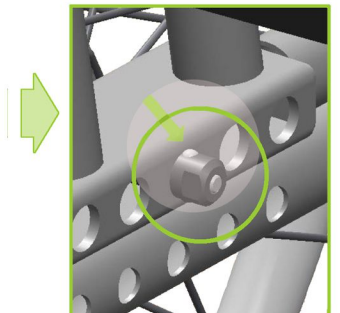
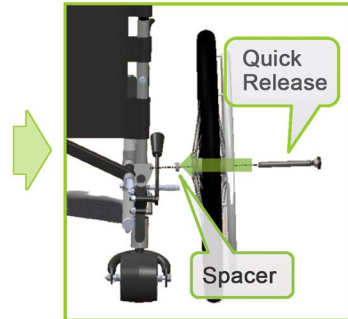
VIDEO INSTRUCTIONS AVAILABLE AT:
www.whirlwindwheelchair/roughrider-support

Fixed Axle

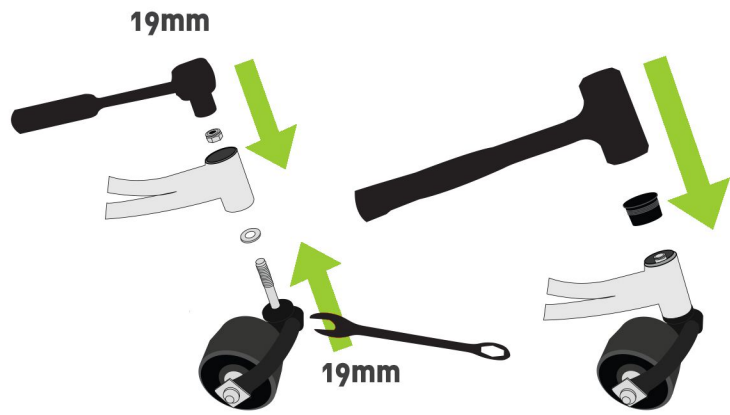


Quick Release Axle

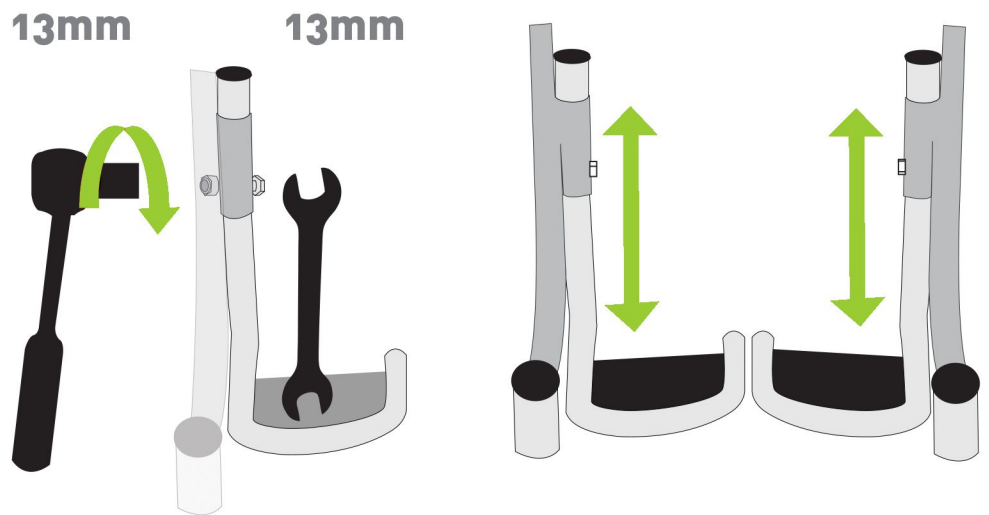
1. While depressing the large black button: put the axle completely through the hub and then place one large spacer on the axle so that the spacer goes between the wheel and the frame.
2. Put the axle through the desired axle hole, making sure that the left and right wheels are mounted in the same position.
3. Make sure the quick release detente (ball) passes completely through the axle so that the axle will not slide out unintentionally. Release the black button and the axle will be locked in place.



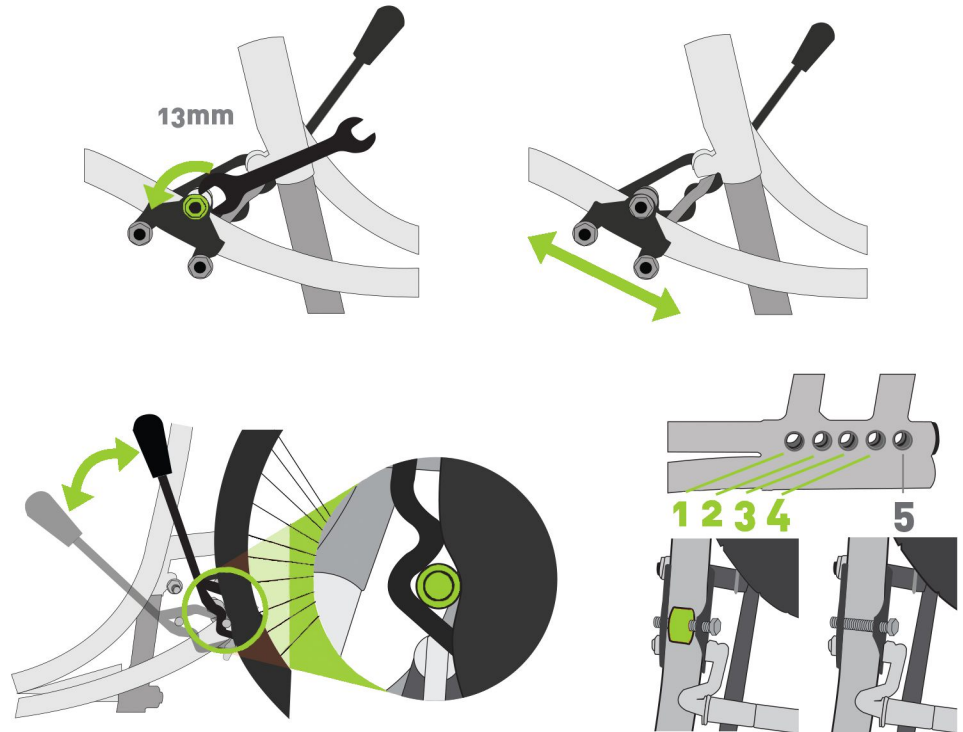
3. Casters



4. Footrests



5. Brakes

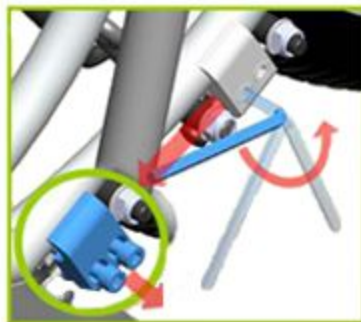


6. Brake Adjustment

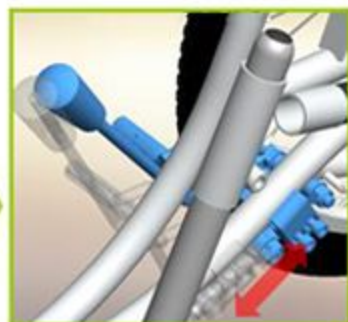


A. RR Brake ASM, RH and LH
B. Allen Key M6

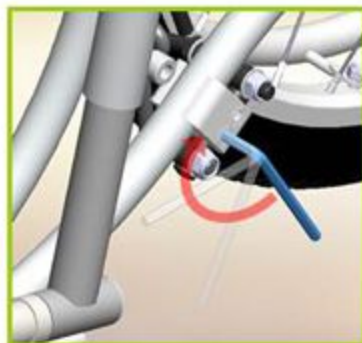
1. Loosen both of the bolts on the brake clamp using the M6 Allen Key.



2. Adjust the brake ASM to the proper position.



3. Make sure the brake shoes hit the wheel perfectly



4. Tighten both of the bolt brake clamps and make sure the brake ASM does not revolve around the frame.

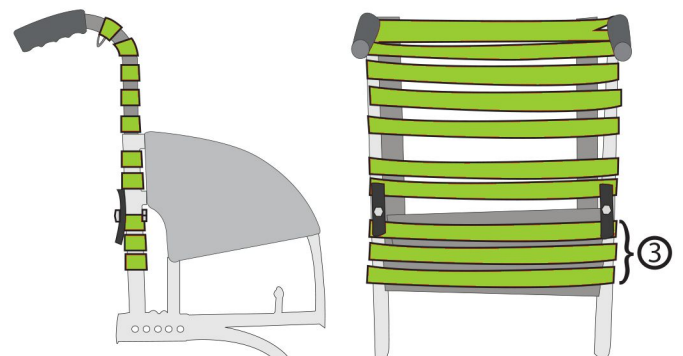
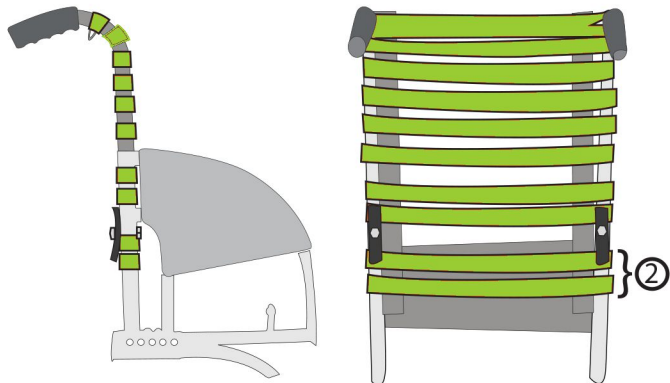
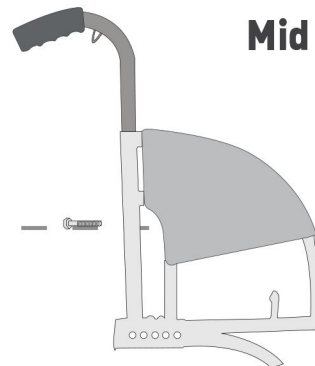
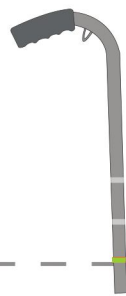
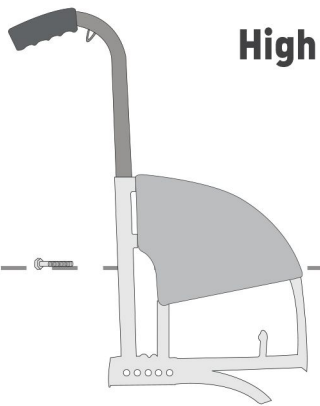
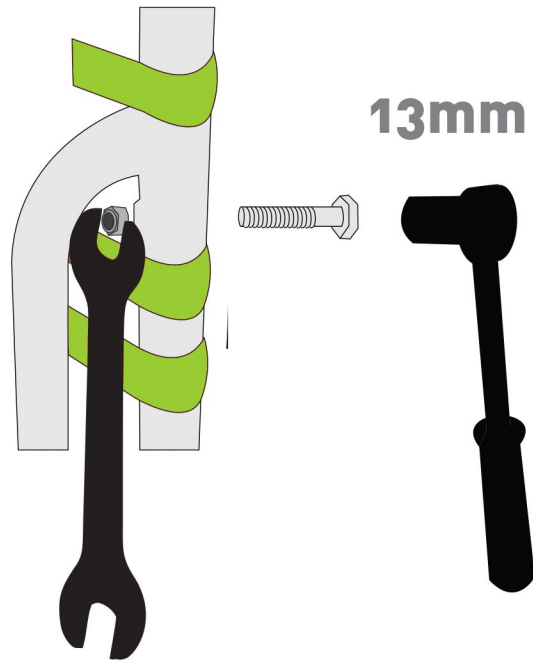


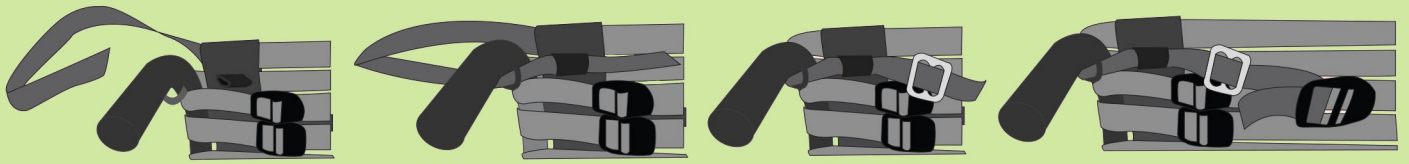
Caution:

- Brake shoe should be horizontal to Rear wheel
- Brake clamp should be parallel to brake lever

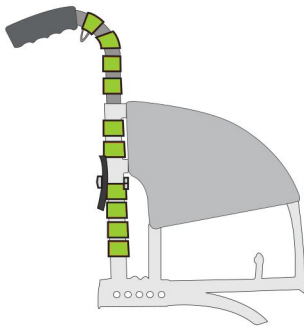
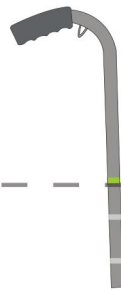
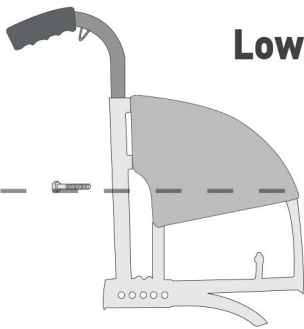
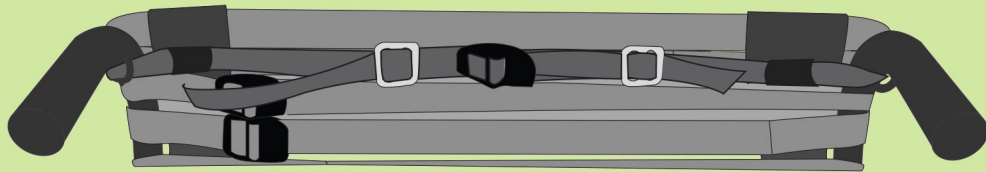


7. Backrest





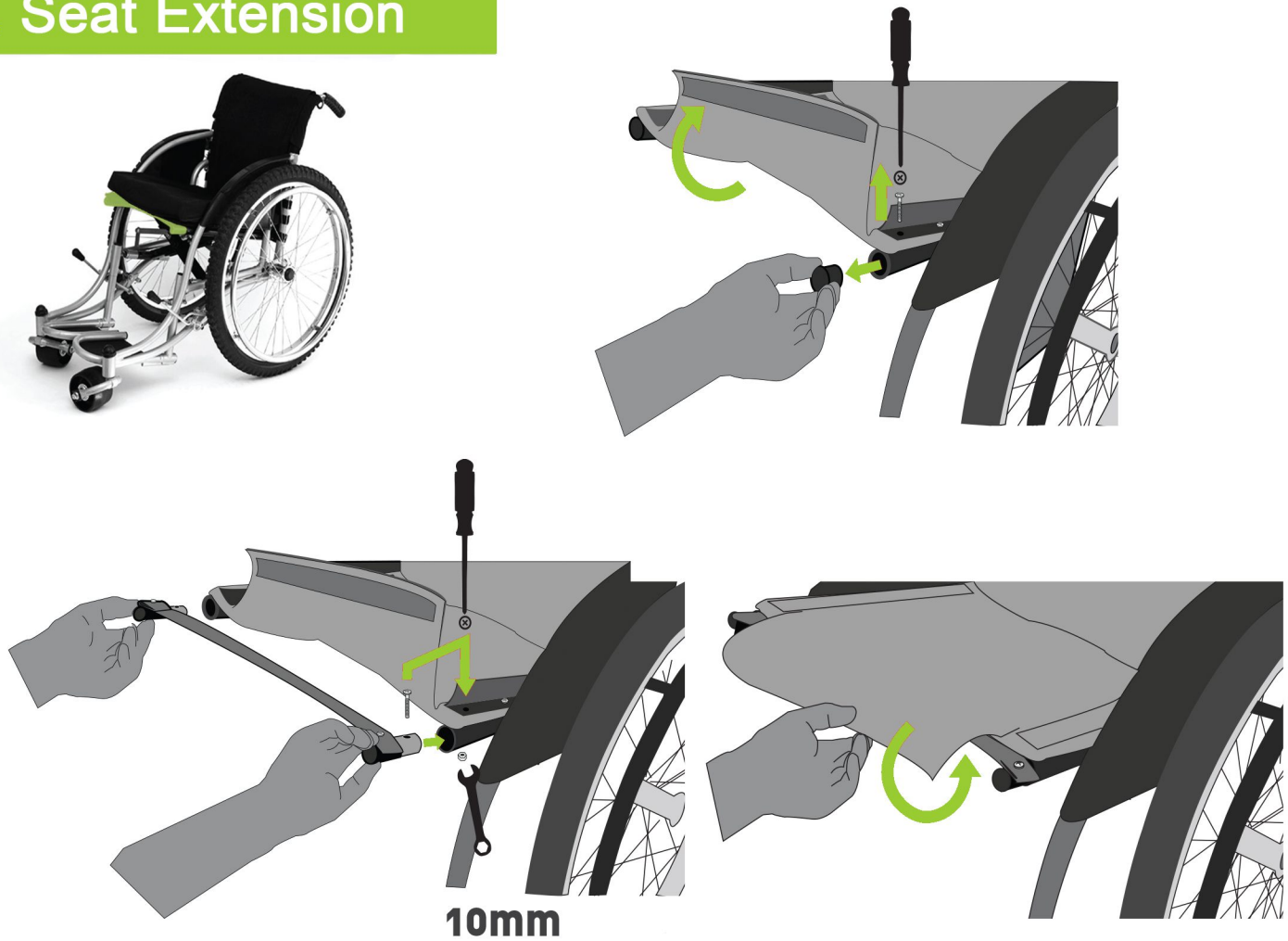
Pre-Assembled



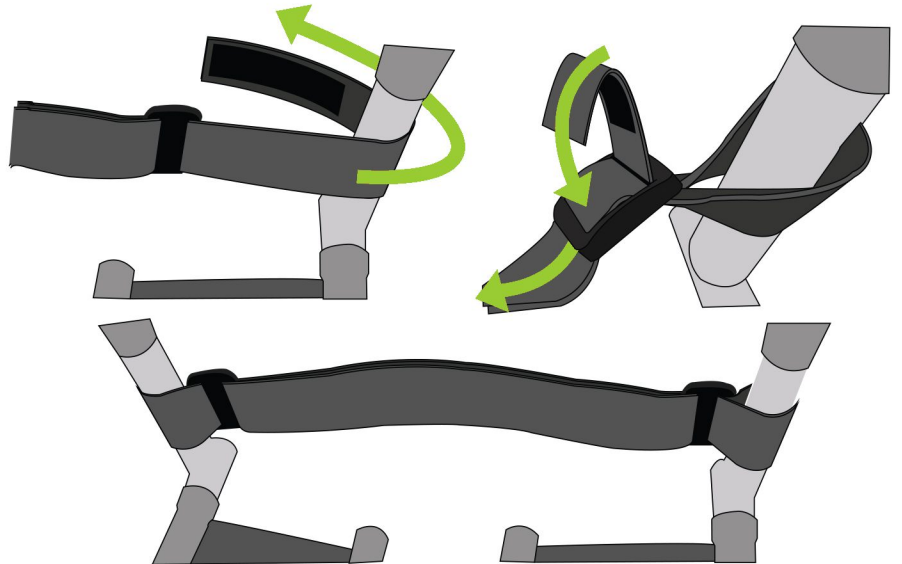
8. Backrest Cover



9. Seat Extension



10. Calf Strap



11. Cushion



Note: Pressure sores can occur at any point of contact between the rider and the wheelchair, including but not limited to backrest, seat or cushion surface, edge of seat, calf strap and footrests.

If riders do not have complete sensation, or if they cannot communicate effectively, riders should have a competent person evaluate the risk of pressure sores.

Riders should monitor themselves carefully, or be monitored by an assistant, to minimize the risk of pressure sores.

Whirlwind recommends professional fitting and rider training from an experienced wheelchair user to avoid any unforeseen problems.

Assembly Checklist

2 Wheels

- Tires are inflated equally to 45-55 psi.
- Rear wheels are positioned in the desired hole, and are the same position on both left and right sides.
- Rear wheel axle bolts are tightened firmly and wheels spin freely.

3 Casters

- The casters spin and rotate freely.

4 Footrests

- Footrests are at the desired height and are set while the cushion is in place.
- Footrests are at the same height on left and right side (unless rider has asymmetrical leg length) and the calf (or heel) strap is adjusted comfortably. Footrests must be high enough to not interfere with the casters as they swivel.

5 Brakes

- Brakes lock and unlock easily, and keep the rear wheel from moving when locked.

6 Backrest

- Backrest tubes are at the desired height and are the same height on left and right side.
- Backrest straps are not twisted or tangled, and they do not prevent the wheelchair from opening fully.
- Backrest straps are adjusted to promote the comfort and posture of the rider, and do not create high pressure areas on any part of the back.

7 Backrest Cover

- Backrest cover is installed with the tabs secured below the backrest straps.

8 Seat Extension

- The seat depth is set according to the rider's preference (with or without extension).
- The wheelchair with rider rolls straight on a level floor. (Not rolling straight may indicate a problem with assembly.)

10 Cushion

- A seat cushion appropriate to the rider's risk of pressure sores is on the chair and correctly fitted to the rider.